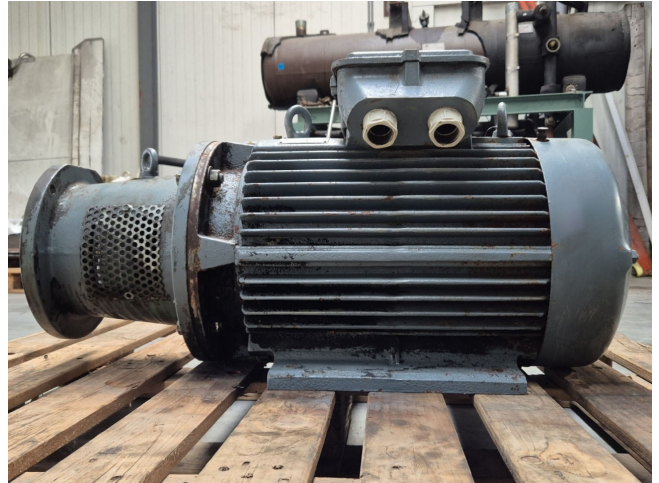


Rotor XKF180L04

Specifications

Marque	Rotor
Type	XKF180L04
kW	22
RPM	1460
Size & Weight	850x370x460 mm (LxWxH) & 210 kg
50 Hz / 60 Hz	50 Hz
Stock	1



Description

Used Rotor XKF180L04

Used Rotor XKF180L04 electric motor with the following specifications: 50 Hz - 22 kW - 1460 RPM.

